



Monitoring Report: March 2016

kHz	UTC	DD	MM	ITU	IDENT	MODE	BD	SH (BW)	DETAILS
80m band informational only! Primary but shared with other also primary allocated services									
3503.5	2218	08	03			PSK8	2400	~2k7	MIL188-110A (Hybrid), preamble 4 tone PSK4
3525.0	2318	04	03			DQPSK	14x75	5k9	LINK 11 CLEW; (STANAG 5511) DSB Mode almost daily
3527.0	2315	04	03			F1B	50	200	
3530.0	1744	16	03		5880	MFSK8	125	1750	MIL 188-141A
3532.0 VFO USB	2315	21	03			DQPSK	14x75	2k34	LINK 11 CLEW; (STANAG 5511) in upper sideband
3532.0	1937	30	03			DQPSK	14x75	5k9	LINK 11 CLEW; (STANAG 5511) DSB mode
3548.0	0011	07	03			F1B	50	200	
3549.0 VFO USB	2320	09	03			PSK8	2400	~2k7	MIL188-110A (Hybrid), preamble 4 tone PSK4 often
3553.6	2338	07	03			PSK8	2400	~2k4	Stanag 4285 daily
3557.0	2325	21	03			F1B	75	250	almost daily
3582.0	1944	30	03			J7D	12x120	2k7	PSK-2: CIS12 = AT3004D
3608.0	2320	04	03			F1B	50	200	often
3608.0	2320	04	03			F1B	50	200	often
3767.0	1941	30	03			J7D	12x120	2k7	PSK-2: CIS12 = AT3004D
6998.0 VFO USB	0235	01	03			H3E-U Bursts		~3k6	up to ≥7001.5kHz; modulated with 120Hz daily
6998.5	1234 1255	08	03		OL1 MA3	MFSK8	125	1750	MIL 188-141A, partially in 40m band; followed by voice in J3E-U
6998.5 VFO USB	1312	08	03			PSK8	2400	2k4	MIL 188-110A
7000.0 VFO USB	1216	08	03			DQPSK	14x75	~2k7	LINK 11 CLEW TADIL A MIL-STD 188-203-1A
7000.0 VFO USB	1638	28	03			PSK8	2400	2k4	Stanag 4285 600bps/long
7005.0	2316	01	03			J3E-L			Indonesian village radio
7010.0	2320	05	03			J3E-L			Indonesian village radio
7016.0	2303	01	03			F1B	75	250	
7020.0	2323	05	03			J3E-L			Indonesian village radio
7020.0	1638	07	03			J3E-L		2k4	Spanish, calling "Victoria"
7020.0	1750 vt	07 vd	03			MFSK8	125	1750	MIL 188-141A many different ID's daily found
7020.0	1937	07	03		820699	MFSK8	125	1750	MIL 188-141A To:RS008D
7020.0	2030	07	03		810612	MFSK8	125	1750	MIL 188-141A To:RS008D
7020.0	2034	07	03		810616	MFSK8	125	1750	MIL 188-141A To:RS0012D
7020.0	2034	07	03		823199	MFSK8	125	1750	MIL 188-141A To:RS008D
7020.0	2036	07	03		820612	MFSK8	125	1750	MIL 188-141A To:RS0012D
7023.0	2331	02	03			FMOP ?	50 sps	~13k	OTHR; occup. BW approx 30k
7026.0	0854	10	03			J7D	12x120	2k7	PSK-4: CIS12 = AT3104D
7035.0	2325	01	03			J3E-L			Village radio
7037.0	1937	31	03			J7D	12x120	2k7	PSK-2: CIS12 = AT3004
7039.3	2319	15	03	RUS	K	A1A			Beacon K Petropavlovsk daily
7039.4	2301	01	03	RUS	M	A1A			Beacon M Magadan
7050.0	2305	08	03			J3E-L			Village radio
7064.0	0008	10	03			FMOP ?	50 sps	~13k	OTHR; occ BW approx >30k



kHz	UTC	DD	MM	ITU	IDENT	MODE	BD	SH (BW)	DETAILS
7077.0	1714	11	03			?		2k1	undefined burst signal; most probably jamming of JT65 signals
7080.0	1742	03	03			F1B	50	200	often
7111.0 VFO LSB	2244	01	03			MPSK	30x60 Bd	~2k4	Burst system; spacing 75 Hz preamble 4x PSK4 60Bd, spacing 600Hz; Pilottone at 450Hz
7114.0	2239	01	03			F1B	50	200	CIS 50-50
7115.5	2257	01	03			J7D	12x120	2k7	PSK-2: CIS12 = AT3004D
7119.0	2259	01	03			J7D	12x120	2k7	PSK-2: CIS12 = AT3004D
7120.0	0344	01	03	SOM		A3E			Radio Hargaysa almost daily
7121.0	1705	11	03			J7D	12x120	2k7	PSK-2: CIS12 = AT3004D
7134.0	1508	05	03			F1B	50	200	
7140.0	1934	28	03			FMOP ?	50	~13k	OTHR
7141.0	2248	01	03			J7D	12x120	2k7	PSK-2: CIS12 = AT3004D
7148.0	1015	01	03			J7D	12x120	2k7	PSK-2: CIS12 = AT3004D
7149.5	1922	30	03			J7D	12x120	2k7	PSK-2: CIS12 = AT3004D often
7197.0	2234 vt	04 vd	03	TUR	various	MFSK8	125	1750	MIL 188-141A; many different ID's daily
14026.0	0901	10	03			J7D	12x120	2k7	PSK-2: CIS12 = AT3004D often
14180.0	0939	03	03			F1B	36+50	200	CIS 36-50
14192.0	1022	01	03			F1B	50	500	CIS 50-50 almost daily
14253.0	0833	14	03			F1B	75	250	
14295.0	1302	02	03	TJK		A3E			BC: 3 rd of Radio Tajik at 4765 kHz
14300.0 VFO USB	1026	01	03			BPSK	16x75	2k2	Burst system; 16 tones, tone-spacing appx 114Hz; 2 pilottones often
18107.0	1030	04	03		RDL	F1A		200	followed by F1B often
18107.0	1031	04	03			F1B	36 + 50	200	CIS 36-50 often
21200.0	1327	05	03			FMCW	50	20k	OTHR
21438.0	0952	03	03		RCV	A1A			letters and figures almost daily

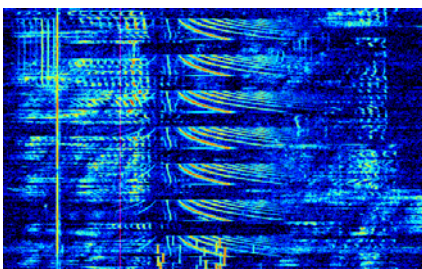
Errors and omissions excepted

Digital transmissions: Frequency indications mostly center frequency; otherwise indicated
ALE MIL 188-141A = is usually USB VFO!

BC = Broadcast // **BD** = Baud, or also Burst duration // **BRI** = Burst repetition interval // **SH** = Shift or Spacing (Hz)
BW = Bandwidth // **OTHR** = over the horizon radar // **FMCW** = frequency modulated continuous wave //
FMOP = frequency modulated on pulse // **sps** = sweeps per second // **vd** = various dates // **vt** = various times

Peter A. Jost / HB9CET
Vice-Coordinator IARU Monitoring System R1
Friedheimstrasse 34b
CH 8057 Zürich
E-Mail: guard@uska.ch

USKA Radio Monitoring
www.uska.ch/monitoring
Member of IARU Monitoring System
www.iaru.org/monitoring-system
www.iarums-r1.org/



Long lasting burst signal at 7077 kHz
Most probably a ham jamming JT45 emissions

We are not amused

Screenshot from Perseus SDR